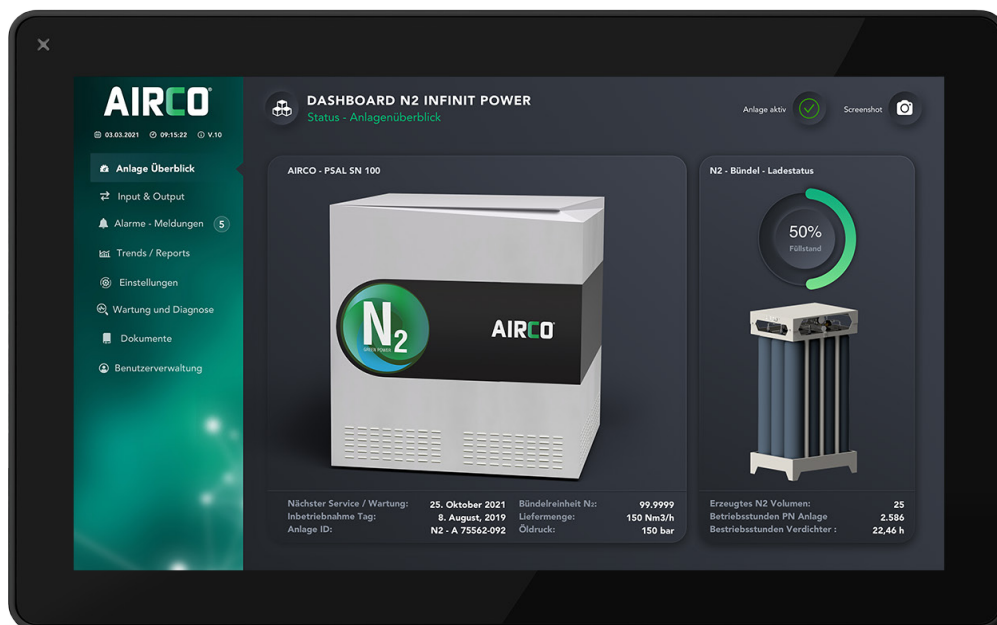


CONTROL AIRCO® INFINIT TOUCH

FOR OPTIMAL CONTROL OF YOUR PLANT

The perfect interface for flexible control of all components - fast, easy and safe.

AIRCO® INFINIT TOUCH supports you in controlling your plant. All necessary parameters and settings can be found clearly sorted. In addition to the worldwide secure access the control also offers a documentation of all processes and sequences, as well as a practical screenshot function in all menu areas.



For customers with photovoltaic systems our control system offers an additional interface. This automatically switches to the self-generated electricity and optimizes the energy consumption of your cutting system.

